

# Milešovka

 <https://goo.gl/maps/wEbeFHdgLPfLQpo86>

## How to Get There:

You can buy the tickets on the website “České Dráhy”: <https://www.cd.cz/en/>. We recommend taking the train from Prague Main Station to the city called Velešín. Please note that it is **necessary to transfer in Lovosice**, as no direct trains go there from Prague.

There is a possibility to use services of **Uniqway**, which is a carsharing made by students of ČVUT, ČZU and VŠE for students and employees of all universities in Czech Republic (Exchange students included). You can choose from 27 cars, many of which have automatic transition. There are no registration fees and there are zones right next to universities, dorms or in the city centre. There are no car keys needed: you will unlock the car via the app and your student card. You can register on this website: <https://www.uniqway.cz/en/registrace>. You will need ID (passport), student ID, driving licence. You can find more information on their website <https://www.uniqway.cz/>, or you can follow their facebook and instagram.

## Where to Eat:

We recommend taking your own snacks for the hike as there won't be any restaurants on the way up. On the top of the mountain there should be a buffet, however, because of Covid restrictions, do not rely on it and bring your own drink, food and snacks.

## Application


It is also possible to download an application where you can track the whole journey – whether you are going the right direction. It should be set automatically in English, in case it isn't, it is possible to change the language in the settings.

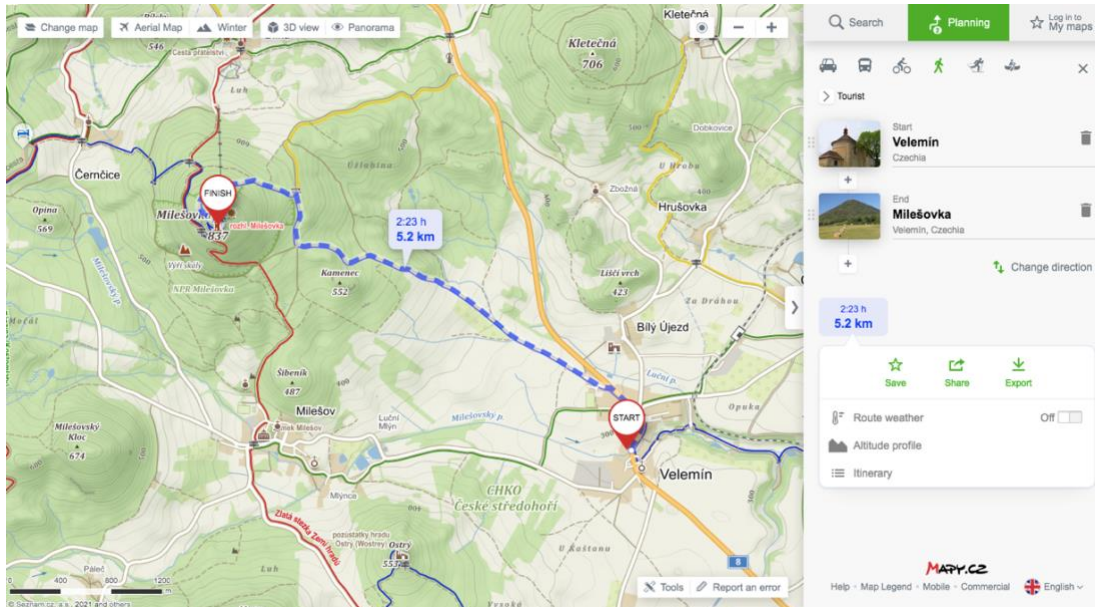




## What to wear:

It would be best if you could wear hiking boots (or winter shoes suitable for hiking) and warm winter jacket. Bear in mind you are going to mountains, so do not underestimate the preparation. There is an extreme elevation, therefore consider whether you have suitable physique.

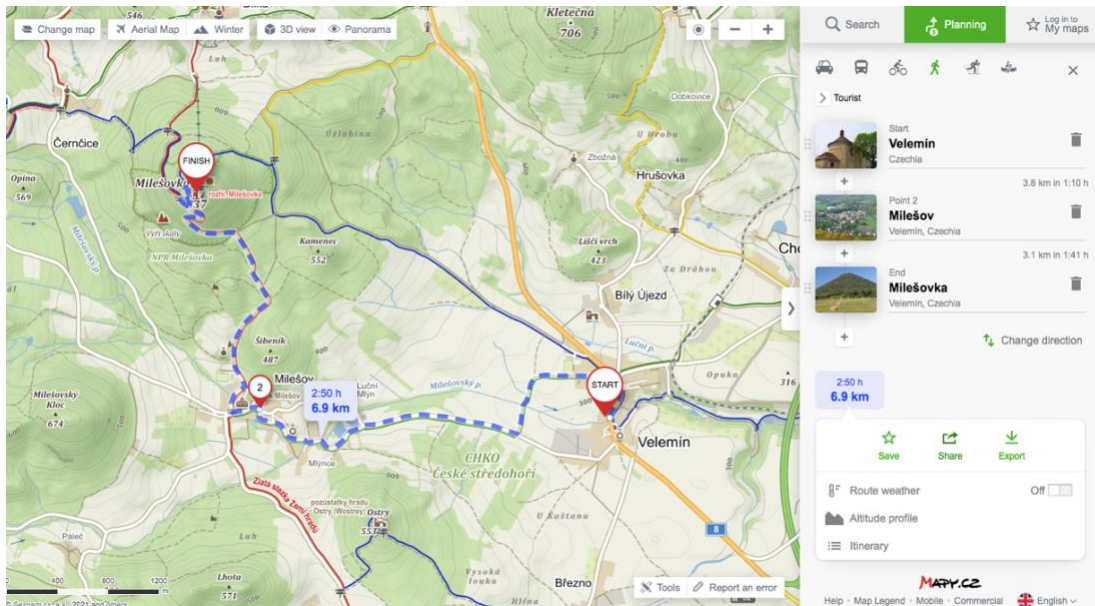
## Hike:

There are 2 ways how to get to the top. One of them takes less time. You will go the whole time through the blue path, look for this sign . It takes approximately 2 and half hours, the one-way distance is 5,2 kilometres and the altitude difference is 547 meters.



Second option takes more time, but you will go through a village called Milešov, where you can find a castle. In order to get to Milešov, take the green path . From Milešov, take the red path .

It takes approximately 3 hours; the one-way distance is 6,9 kilometres and the altitude difference is 540 meters.



It is also possible to combine these two roads. First you can get to the top through Milešov (2<sup>nd</sup> option) and go down the blue path (1<sup>st</sup> option).

## Milešov

As mentioned above, in Milešov, you will be able to see the castle and the mountain Milešovka.



## Milešovka

Hopefully, the weather will be good and on the top, you will have a following view of the countryside:

